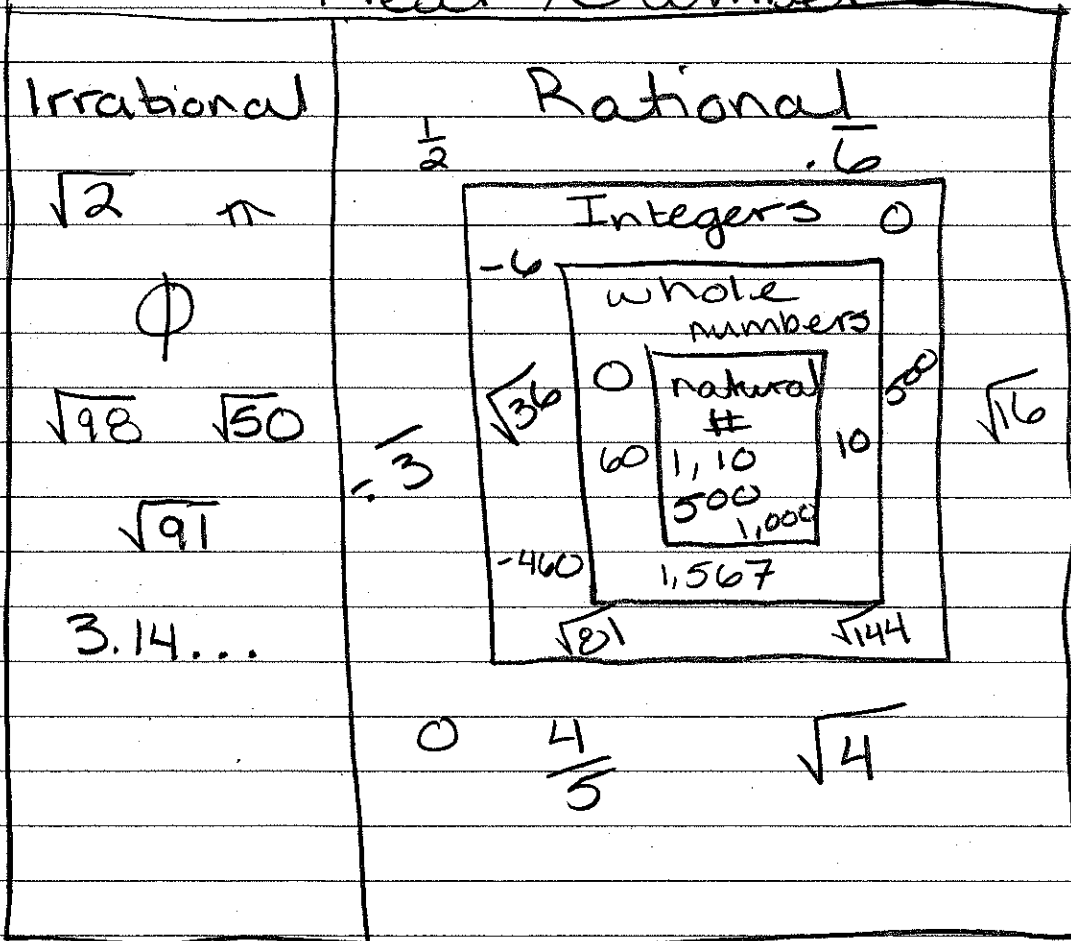


Sept. 25th

1-1 Operations on Real Numbers

Real Numbers



Set - is a collection of objects

examples: bowl of fruit
animals on a farm
numbers

Elements of a Set - is a particular object that is in the set.

$$A = \{1, 2, 3, 4, 5, 6, 7, 8, 9, 10\}$$

elements in
the set

name
of
set

Subset - is another type of number/object that is also found in the original set.

$$B = \{2, 4, 6, 8, 10\} \text{ even numbers}$$

subset

$$C = \{5, 10\} \text{ multiples of 5}$$

Example 2:

$$A = \{5, 6, 7, 8, 9, 10, 11, 12\}$$

subsets $B = \{6, 8, 10, 12\}$ even numbers
+ multiples of 2

$C = \{6, 9, 12\}$ multiples of 3

elements in all 3 are

$$6 + 12$$

Ordering Numbers from
least to greatest

$$\frac{40}{11}$$

$$\sqrt{\frac{324}{36}}$$

$$\sqrt{10}$$