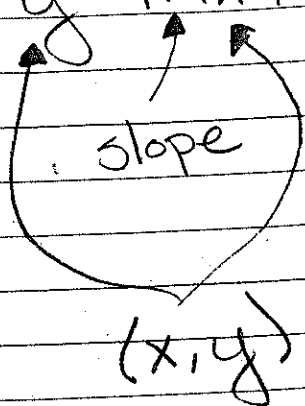


Dec 8th

Parent Functions

① $y = mx + b$ Slope Intercept Form



y-intercept

Linear

Equation

$y = mx$ will always go through the origin

$$y = -2x + 1$$

x	y
-2	5
-1	3
0	1
1	-1
2	-3

these are ordered pairs that can be graphed on a coordinate plane.

② $y = |x|$ Absolute Value

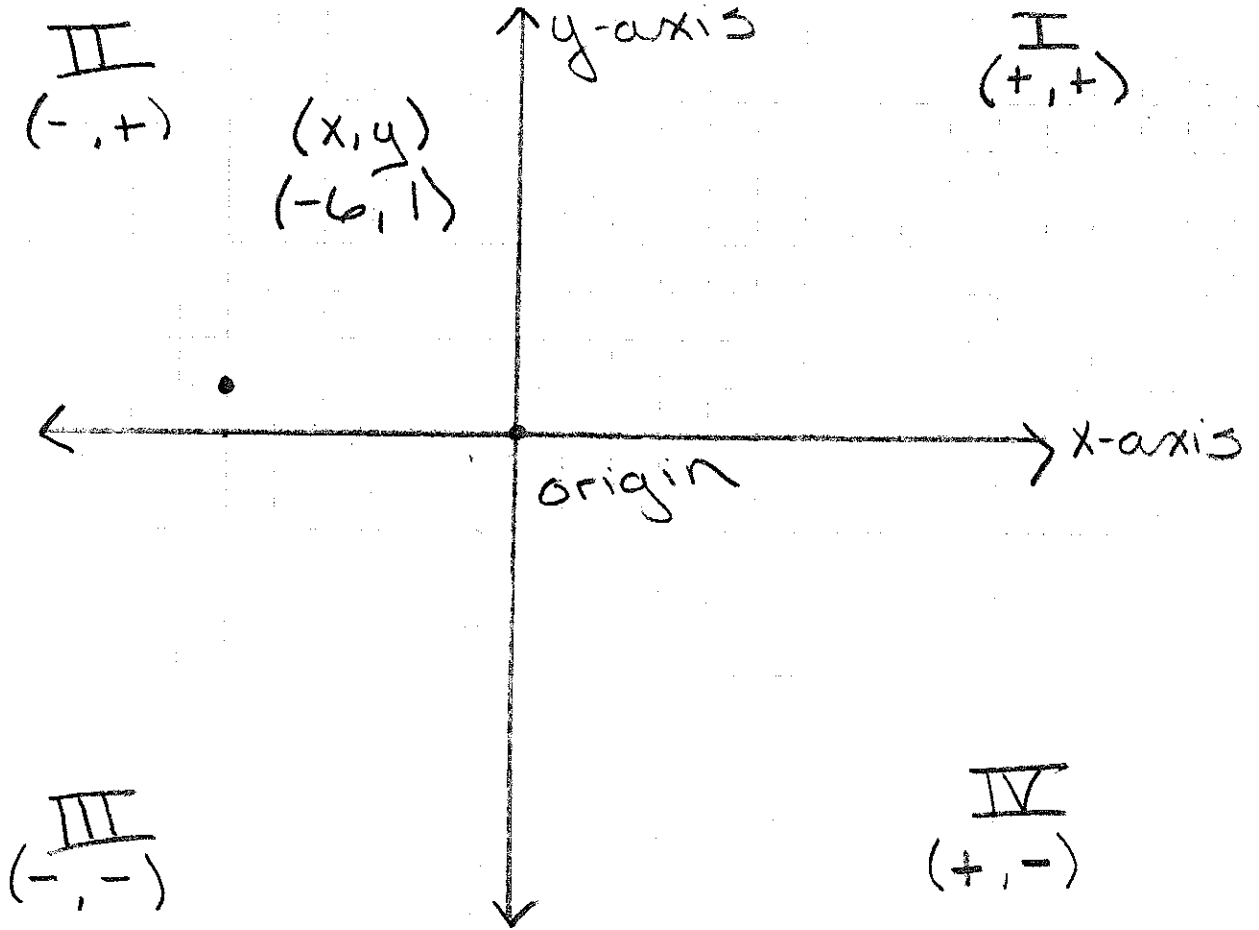
Equation

x	y
-2	2
-1	1
0	0
1	1
2	2

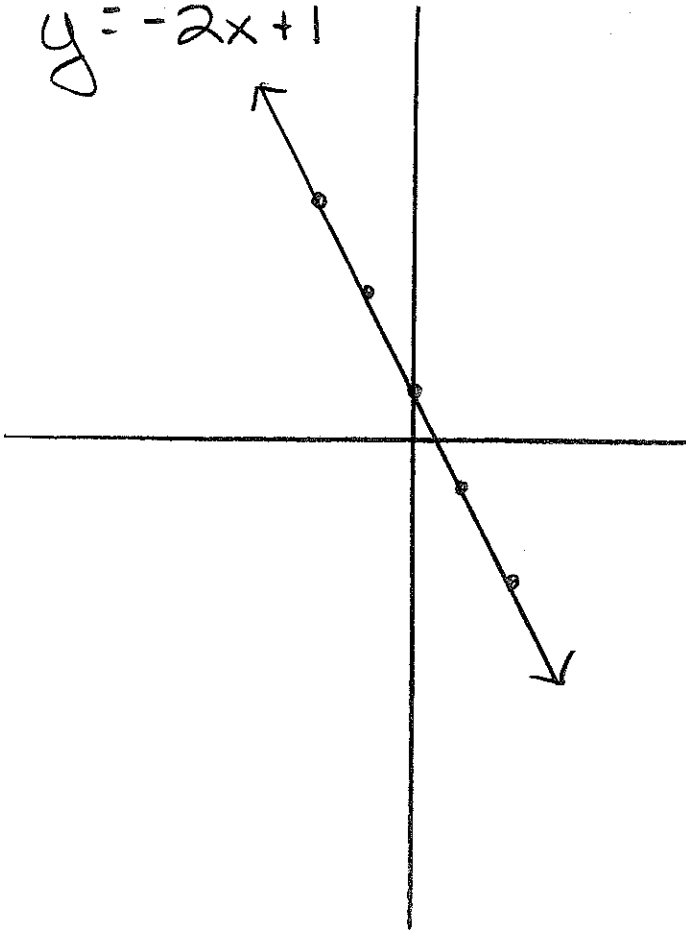
* will ALWAYS
be a ∇

- it's a
reflection over
the y-axis

$y = -|x|$



$$y = -2x + 1$$



$$y = |x|$$

